

**Winemaker** Baptiste Nayrand  
**Region** Northern Rhône  
**Location** Millery

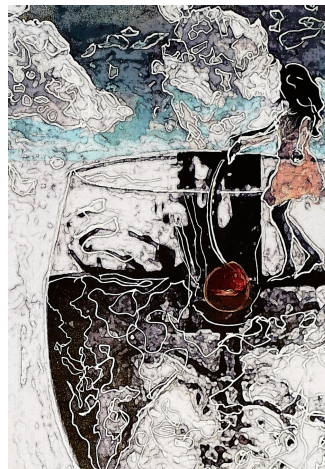


**Appellation(s)** Coteaux du Lyonnais  
**Farming** Certified Organic

# 'Toit du Monde'

## Baptiste Nayrand

Vin de France  
Gamay



### Variety

100% Gamay

### Vineyards

Bibost

### Vine Age

1929

### Size

6 hectares total at the domaine

### Terroir

Les Brosses - deep clay  
and Galets. Les Charmes - schist

### Vinification

All of Baptiste's reds are made with whole cluster and native yeast fermentation with no added sulfur, but the rest of the vinification changes based on Nayrand's intuitive feeling at each harvest to make the best wine possible from that year's grapes. '

### Notes

'Toit du Monde' comes from old vines planted in 1929 in the commune of Bibost, located up in the hills further away from the city of Lyon. The vines are between 500 and 700 meters in altitude, planted facing east on a vein of blue diorite similar to that found on the Côte de Brouilly. After making his first few vintages in his garage in Millery, Baptiste decided to move his home and winery to Bibost in 2020, where there is more open space and less encroachment from the city. He continues to farm the vines around Millery, and has added additional vineyards in Bibost.

## About Baptiste Nayrand

Originally from the area around Lyon, Baptiste Nayrand created his eponymous domaine from scratch in 2014. Today he has just over six hectares of vines, which is the maximum he can farm by himself to maintain the quality he requires. The majority of vineyards are dedicated to Gamay in the AOP Coteaux du Lyonnais, a small, rather unknown appellation on the outskirts of Lyon, located between the Beaujolais and the Northern Rhône. There is also a small amount of Chardonnay, Pinot Noir, and Aligoté permitted in the AOP Coteaux du Lyonnais.

